

---

## CasaXPS Features

---

- Easy to use, function rich system
- Powerful, easily applied statistical modules
  - Principal Component Analysis
  - Target Factor Analysis
  - Monte Carlo methods
- Browser for ISO 14976 (VAMAS) files
- Rapid, accurate quantification for routine, repeat analyses
- Unmatched “in-depth” capabilities for research determinations
- Transmission correction routines
- Intuitive ‘identify-annotate-quantify’ sequence
- Widest range of synthetic peak models
- Propagate models and processing across files
- Scrolled/overlaid display for viewing spectra
- Copy and Paste spectra & results into your favourite reporting package
- Convert third party file formats to ISO 14976.

---

## Services

---

- Support contracts
- Personal and Technology Based Training Courses (seminars, CD-ROMs, web based modules)
- Custom Software Development

## To Contact Us

**Phone:**

+44 (0) 1626 879576

**E-Mail:**

neal@casaxps.com

**World Wide Web:**

<http://www.casaxps.com>

**Casa Software Ltd.,**



# CasaXPS

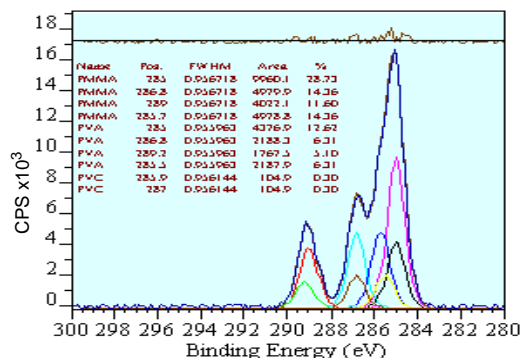
A Complete  
System for  
XPS Spectra

Version 2.0



# CasaXPS Processing Software and VAMAS Browser

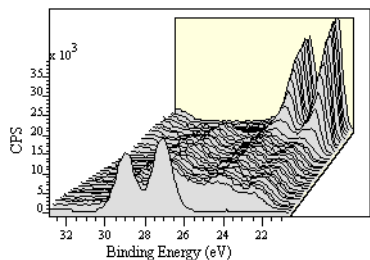
Professional XPS processing Software for Research and Routine Applications



CasaXPS provides the widest range of synthetic peak models, backgrounds and fitting routines to aid secure, swift, identification and quantification

## Depth Profiles

The ISO 14976 (VAMAS) file format is ideal for depth profile data. CasaXPS takes advantage of this ISO standard to provide automatic peak fitting throughout sets of related spectra. Once a synthetic model has been prepared, CasaXPS automatically fits the model to the spectra within a profile. Quantification reports may be compiled and then exported to spreadsheet programs.



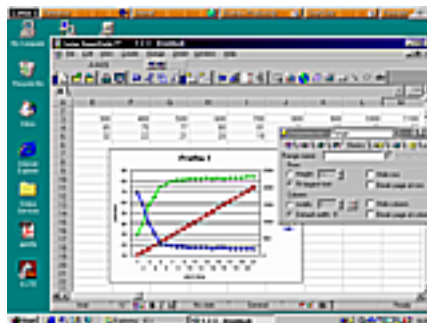
## Quantification Reports

CasaXPS provides the flexibility to generate quantification reports from any combination of integration regions and/or synthetic models. Formulae define the intensities used in the report and the results are exported in ASCII format.

Etch Time	Metal CeVs <sup>-1</sup>	Oxide CeVs <sup>-1</sup>	Metal %	Oxide %
0	3379.485	17784.03	30.273	69.727
100	8224.566	11474.05	41.752	58.248
200	11931.24	9282.595	56.243	43.757
300	15138.87	7400.165	67.167	32.833
400	17384.02	5787.102	75.025	24.975
500	19014.21	5386.156	77.926	22.074

## Use Your Favourite Software

Plot trends and publish reports using your own software. CasaXPS provides spectra in the form of bitmaps, Enhanced Metafiles and TAB spaced ASCII output. Microsoft Word and Excel accept input presented in these formats.

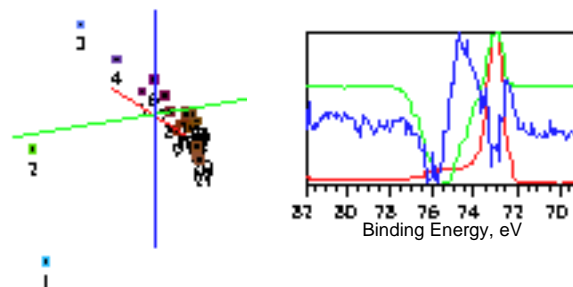


## Portable Information

Provide your customers with more than just paper - CasaXPS standard ISO 14976 formatted data together with software for viewing both processed data and processing history, significantly enhance the user appreciation of your analysis. Purchase of a CasaXPS licence includes a "view only" version of the programme which may be distributed with output data, ensuring true portability and wide accessibility for your spectroscopic information.

## Principal Component Analysis

Advanced tools for analysing data include Principal Component Analysis and Target Factor Analysis. These techniques provide valuable insight into trends present in your data and aid in the creation of synthetic models.



Monte Carlo routines for checking uncertainties and correlations are also directly available and easily applied